

Solid Core Columns



Core-Shell Säulen erlauben eine schnelle, effiziente Trennung bei exzellenter Robustheit. Wir haben ein breites Produktspektrum führender Anbieter für Sie:

GL SCIENCES

InertCore C18 ... trusted long-term reproducibility, expect columns to maintain performance over the lifetime of your method.

RESTEK

Raptor FluoroPhenyl, Biphenyl ... higher efficiency of a superficially porous particle plus the improved resolution of the USLC phases. **NEW:** Raptor HILIC-Si.

NACALAI

Cosmocore C18, Cholester, PBr ... same number of theoretical plates as sub-2 µm columns with half the back pressure.

CHROMANIK

Sunshell C18, RP-Aqua, C8, Phenyl, PFP ... highest retention / largest steric selectivity / lowest backpressure / best peak shape. **NEW:** Sunshell C30 2.6µm.

SEPAX

Opalshell C18 2.6µm, 90A ... great selectivity and peak symmetry for separations of acidic, neutral and basic organic compounds.

KROMASIL

ClassicShell C18, C8 ... UHPLC performance with HPLC pressure.

>> www.cp-analytica.at



Trouble-Free
UHPLC Connections
for Exact Performance
Every Time

Fingertight UHPLC Connection

- Fingertight to 19.000 psi (1.310 bar)
- 100+ connects and disconnects
- No risk of under or over-tightening
- Biocompatible PEEK flow path or SS option
- Face sealing ensures Zero Dead Volume
- Universal for 10-32 (1/16") coned ports

IDEX
Fluidic Products
>Rheodyne,
Upchurch,
Degasser ...



LC GC Zubehör



Article: #204880-10
HAMILTON
Syringe Rack
136,34 ~~151,49~~ EUR



NEW!

Article: #0004-4285-W
BIOTECH DEGASi White
Compact Degasser
4-Channel, 285µl
Systec AF
1.919,00 ~~2.422,00~~ EUR

"High flow (up to 100mL/min), low flow, 1 channel or 8 channels, nasty solvents - we will customize a degasser for you."



Article: #79801-999
RheBuild Kit for
MHP/PD/MXP7980
333,45 ~~351,02~~ EUR

Angebot gültig bis Ende Oktober 2017. Der Aktionscode für Ihre Bestellung: i17g

Septen BTO & Thermolite Plus

GC Hochleistungs-Septen mit exzellenten Durchstich- und Dichteigenschaften.

Article	EUR	AKTION		Description
		EUR	EUR	
27082	103,36	87,86		Septa, Premium BTO 5mm Premium Non-stick w/CenterGuide 50-pk
27083	182,24	154,90		Septa, Premium BTO 5mm Premium Non-stick w/CenterGuide 100-pk
27084	103,36	87,86		Septa, Premium BTO 9mm Premium Non-stick w/CenterGuide 50-pk
27085	182,24	154,90		Septa, Premium BTO 9mm Premium Non-stick w/CenterGuide 100-pk
27086	103,36	87,86		Septa, Premium BTO 9.5mm Premium Non-stick 50-pk
27087	182,24	154,90		Septa, Premium BTO 9.5mm Premium Non-stick 100-pk
27088	103,36	87,86		Septa, Premium BTO 10mm Premium Non-stick 50-pk
27089	182,24	154,90		Septa, Premium BTO 10mm Premium Non-stick 100-pk
27090	103,36	87,86		Septa, Premium BTO 11mm Premium Non-stick w/CenterGuide, 50-pk
27091	182,24	154,90		Septa, Premium BTO 11mm Premium Non-stick w/CenterGuide, 100-pk
27092	103,36	87,86		Septa, Premium BTO 11.5mm Premium Non-stick w/CenterGuide, 50-pk
27093	182,24	154,90		Septa, Premium BTO 11.5mm Premium Non-stick w/CenterGuide, 100-pk
27094	103,36	87,86		Septa, Premium BTO 12.7mm Premium Non-stick w/CenterGuide, 50-pk
27095	182,24	154,90		Septa, Premium BTO 12.7mm Premium Non-stick w/CenterGuide, 100-pk
27096	135,32	115,02		Septa, Premium BTO 17mm Premium Non-stick w/CenterGuide, 50-pk
27097	267,24	227,15		Septa, Premium BTO 17mm Premium Non-stick w/CenterGuide, 100-pk
27098	135,32	115,02		Septa, Premium BTO Premium Non-stick Shimadzu Plug 50-pk
27099	267,24	227,15		Septa, Premium BTO Premium Non-stick Shimadzu Plug 100-pk

Septa Premium BTO



- Temperaturbeständig bis 400 °C (17mm bis 330 °C)
- Teilweise vorgebohrtes Zentrum
- Optimiert für niedriges Bluten und hohe Temperaturbeständigkeit

Wir liefern GC Septen für +++ Agilent +++ Thermo +++ Finnigan +++ Shimadzu +++ Perkin Elmer +++ Brucker/Varian +++ AtasGL +++

Article	EUR	AKTION		Description
		EUR	EUR	
23872	86,00	73,10		Septa Thermolite Plus, Shimadzu Plug, pk.50
23873	150,00	127,50		Septa Thermolite Plus, Shimadzu Plug, pk.100
23875	86,00	73,10		Septa Thermolite Plus, 7mm, pk.50
23876	86,00	73,10		Septa Thermolite Plus, 8mm, pk.50
23878	86,00	73,10		Septa Thermolite Plus, 10mm, pk.50
23874	86,00	73,10		Septa Thermolite Plus, 6mm (1/4"), pk.50
23862	86,00	73,10		Septa Thermolite Plus, 9mm, with CenterGuide, pk.50
23863	150,00	127,50		Septa Thermolite Plus, 9mm, with CenterGuide, pk.100
23866	86,00	73,10		Septa Thermolite Plus, 11.5mm, with CenterGuide, pk.50
23867	150,00	127,50		Septa Thermolite Plus, 11.5mm, with CenterGuide, pk.100
23870	112,00	95,20		Septa Thermolite Plus, 17mm, with CenterGuide, pk.48
23877	86,00	73,10		Septa Thermolite Plus, 9.5mm (3/8"), pk.50
23860	86,00	73,10		Septa Thermolite Plus, 5mm (3/16"), with CenterGuide, pre-drilled, pk.50
23861	150,00	127,50		Septa Thermolite Plus, 5mm (3/16"), with CenterGuide, pre-drilled, pk.100
23864	86,00	73,10		Septa Thermolite Plus, 11mm (7/16"), with CenterGuide, pk.50
23865	150,00	127,50		Septa Thermolite Plus, 11mm (7/16"), with CenterGuide, pk.100
23868	86,00	73,10		Septa Thermolite Plus, 12.7mm (1/2"), with CenterGuide, pk.48

Thermolite Plus Septa



- Verwendbar bis 350 °C (17mm bis 300 °C)
- Äußerst niedrig blutend
- Die neuartige Plasma-Beschichtung verhindert das Festkleben



Restek GC Septen werden in ultrareiner Blisterpackung - 12.7 und 17mm BTO Septen im Schraubglas geliefert.

SPME MicroCenter Caps and Septa

Micro-thin septum center - ersparen Sie sich verbogene Nadeln oder gebrochene SPME Fasern.

Description	Septa Material	Type	Color	Article	
				100 PK	1000 PK
SPME Vial Cap 18mm	MicroCenter PTFE/Silicone	Screw-Thread		23852	23853
SPME Vial Cap 20mm	MicroCenter PTFE/Silicone	Bi-Metal Crimp	Blue	23854	23855
SPME Vial Cap 20mm	MicroCenter PTFE/Silicone	Bi-Metal Crimp	Red	23856	23857
SPME Vial Cap 20mm	MicroCenter PTFE/Silicone	Steel Crimp	Gold	23858	23859
SPME Vial Septa 18mm	MicroCenter PTFE/Silicone			23850	23851



MicroCenter PTFE/Silicone SPME Septa

Consumables & Supplies

GL Sciences (Japan) ist bekannt für seine extrem inerten LC-Säulen und präsentiert nun im aktuellen LC/GC Zubehör Katalog sein umfangreiches Chromatographie Zubehör.

>> Sample Preparation, Titansphere, MonoTip, MonoSpin, MonoTrap, InertCap, (GC Columns), Leak Detector, Air Sampling ...



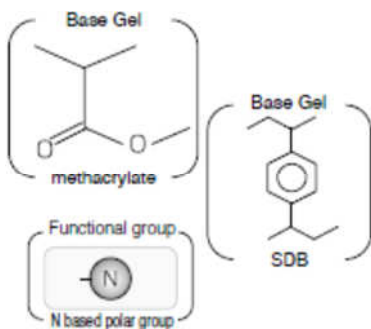
5010-68054-10
InertSep GC/SAX/PSA/SI
500/500/500/500mg/20mL, 20PK
4 layer SPE cartridge for superior multi-residue pesticide cleanup.
219,30 ~~243,63~~ EUR



5010-50410-10
GL-SPE Natural Drop Rack Basic Unit
with adjustable height.
327,00 ~~363,29~~ EUR



7510-11021-5
FastRemover for Phospholipid 0.2um
155,70 ~~163,86~~ EUR



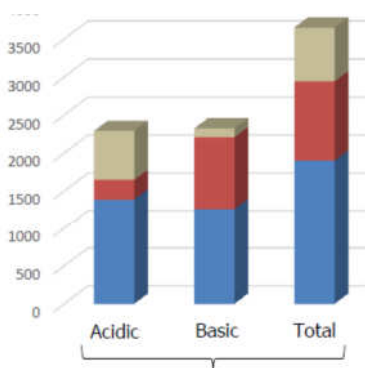
5010-66230-10
InertSep 96-well Plate PHARMA 30mg
350,30 ~~389,16~~ EUR



5020-10222-5
MonoCap C18 Fast-flow 0.075X150mm
PEEK type 1/16 inch
1.030,00 ~~1.084,16~~ EUR



5010-21531-5
MonoFas DNA Purification kit 1
purifies DNA from PCR products and
agarose gels.
190,50 ~~200,51~~ EUR



5010-21282-5
Titansphere Phos-TiO MP Kit
1mg/200uL 24pcs
Efficiently enrich BOTH singly and
multiply phosphorylated peptides.
197,65 ~~208,05~~ EUR



1010-69142-10
InertCap Chiramix 0.25mm x 30m
df=0.25um coated with a mixture of
cyclodextrin derivatives, 200 °C max
853,20 ~~948,00~~ EUR

1010-19146-10
InertCap AQUATIC-2 0.25mm x 30m
df=1.4um; 25 % Diphenyl- 75 %
Dimethyl polysiloxane, USP G28.
398,70 ~~443,00~~ EUR



2702-19340-10
Gas Leak Detector LD239
The LD239 detects up to
0.0005mL/min of helium gas.
With the USB port, the LD239 can be
recharged easily anywhere.
1.170,00 ~~1.300,00~~ EUR



PEAK SCIENTIFIC **GAS GENERATORS**

Solaris N2 - Nitrogen for ELSD and Compact MS

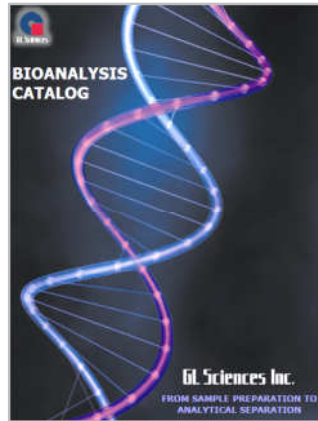
Nitrogen for ELSD at up to 10 L/min, 100 psi and up to 99.5% purity

For labs using ELSD detectors with their HPLC, the Solaris nitrogen generator is a dedicated, cost effective and convenient gas supply solution delivering up to 10L/min of up to 99.5% pure nitrogen.

RESTEK
GC Columns



GL SCIENCES
Bioanalysis



PSS
GPC Columns



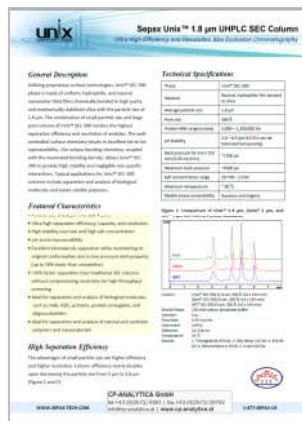
VICI-VALCO
Fluid/Gas Transfer



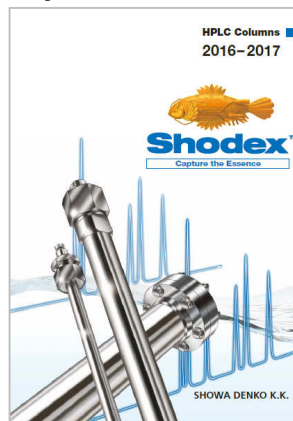
GL SCIENCES
LC Columns



SEPAK
Size Exclusion



SHODEX
Polymer LC



HAMILTON
Syringes



RESTEK
LC/GC Accessories



NACALAI
HPLC Columns



IDEX
Rheodyne, Upchurch



PEAK
Gas Generators

